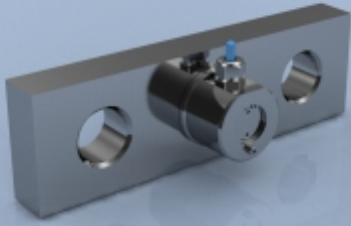


**TYPE: ALL**



# ALL ATEX Stainless Steel Load Link

## Description

The LCM series of ATEX/IECEx load monitoring links are designed for general use and meet the requirements for Zone 1 and 2 operation, which enables them to be used in potentially explosive atmospheres without the need for any additional certified interface. They are ideal for lifting and weighing applications, and are suitable for use in rugged or harsh environments, being manufactured entirely from stainless steel.

The ALL ATEX series are simple to install and are matched to standard shackle sizes. The load links are supplied with integral cable, but can also be supplied with connectors that are suitable for hazardous area use, and the whole package is environmentally sealed to IP67. The ALL range can be supplied as shown in this data sheet, or can be modified to meet a particular application requirement. We are always pleased to discuss any special requirements that can be accommodated.

The ALL load link can be supplied on its own or combined with our extensive range of instrumentation to provide a complete load monitoring system.

## Specification

Rated load (tonne)	5, 10, 20, 25, 30, 40, 50, 100
Proof load	150% of rated load
Ultimate breaking load	>300 % of rated load
Output	1.5 mV/V at rated load ( $\pm 10\%$ )
Accuracy	$< \pm 0.25\%$ of rated load
Non-repeatability	$< \pm 0.05\%$ of rated load
Excitation voltage	10vdc recommended, 15vdc maximum
Bridge resistance	350 $\Omega$
Insulation resistance	>500M $\Omega$ @ 500vdc
Operating temperature range	-20 to +55°C
Compensated temperature range	-10 to +50°C
Zero temperature coefficient	$< \pm 0.01\%$ of rated load/°C
Span temperature coefficient	$< \pm 0.01\%$ of rated load/°C
Environmental protection level	IP67
Connection type	10 metres PUR 4-core cable
Wiring connections	+ve supply: Red      -ve supply: Blue +ve signal: Green    -ve signal: Yellow
Certification	II 2 G EX d IIC T6 Gb IP6X T <sub>amb</sub> -20°C to +55°C II 2 D Ex tb IIIC T85°C Db IP6X T <sub>amb</sub> -20°C to +55°C
Certificate numbers	IECEx TRC 14.0011x, TRAC 14ATEX0023x

## Available Options

- Special ranges and sizes available
- Displays and specially packaged electronics available on request
- Can be supplied complete with shackles
- Can be supplied with integral signal conditioning
- Optional complete carry kit
- Special electrical connections
- External termination box (see AEN datasheet)



## Features

- Ranges: 5 to 100 tonne
- Stainless steel construction (17-4PH)
- Environmentally sealed to IP67
- Special sizes available
- Higher range versions available
- Amplified output version available

## Typical Applications

- Cable tension monitoring
- Under-hook hoist and crane weighing
- Towing/mooring tension
- Crane safe load monitoring

### LCM Systems Ltd

Unit 15, Newport Business Park, Barry Way,  
Newport, Isle of Wight PO30 5GY UK

Tel: +44 (0)1983 249264

Fax: +44 (0)1983 249266

sales@lcm systems.com

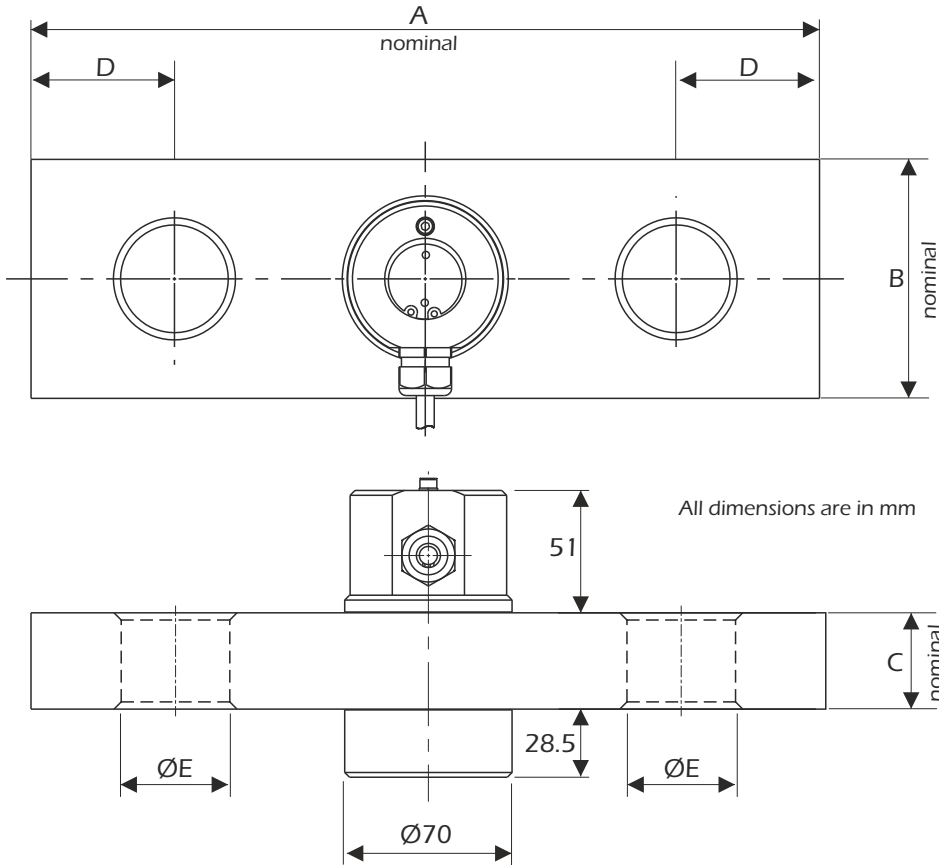
www.atexloadcell.com

www.lcm systems.com

TYPE: ALL

# ALL ATEX Stainless Steel Load Link

## Dimensions



Rating (tonnes)	Part Number	A	B	C	D	ØE	Weight (kg)	Resolution (tonnes)
5	ALL-5	230	75	25	37.5	27	2.5	0.005
10	ALL-10	260	75	25	40	38	3	0.01
20	ALL-20	330	100	40	60	53	7.5	0.02
25	ALL-25	330	100	40	60	53	7.5	0.02
30	ALL-30	370	125	40	67.5	59	12	0.05
40	ALL-40	420	140	50	79	72	15	0.05
50	ALL-50	430	140	50	77.5	72	18	0.05
100	ALL-100	480	166	69	101	84	37	0.1



www.atexloadcell.com



Due to continual product development, LCM Systems Ltd reserves the right to alter product specifications without prior notice.

Issue No. 2

Issue date: 15/01/2015

APPROVED

(unapproved if printed)