



1 **EC TYPE EXAMINATION CERTIFICATE**

2 Equipment or protective system intended for use in potentially explosive atmospheres –
Directive 94/9/EC – Annex III

3 EC Type Examination **TRAC14ATEX0047X**
Certificate No.:

4 Equipment: **Junction Box Enclosure, 4290**

5 Manufacturer: **LCM Systems Ltd.,**

6 Address: **Unit 15, Newport Business Park, Barry Way, Newport, Isle of Wight,
PO30 5GY, United Kingdom.**

7 This equipment and any acceptable variation thereto is specified in the schedule to this certificate and the documents therein referred to.

8 TRaC Global Ltd, Notified Body number 0891 in accordance with Article 9 of the Council Directive 94/9/EC of 23 March 1994, certifies that this equipment has been found to comply with the Essential Health and Safety Requirements relating to the design and construction of equipment or protective system intended for use in potentially explosive atmospheres given in Annex II to the Directive.

The examination and test results are recorded in the confidential report **TRA-023079-33-00A**.

9 Compliance with the Essential Health and Safety Requirements, with the exception of those listed in section 18 of the schedule to this certificate, has been assured by compliance with:

EN 60079-0:2012

EN60079-1:2007

EN60079-31:2009

10 If the sign "X" is placed after the certificate number then this indicates that the equipment or protective system is subject to special conditions of safe use specified in the schedule to this certificate.

11 This EC-Type Examination certificate relates only to the design and construction of the specified equipment in accordance with Directive 94/9/EC. Further requirements of this Directive apply to the manufacture and supply of this equipment.

12 The marking of this equipment or protective system shall include the following:

II 2 G Ex d IIC T6 Gb

II 2 D Ex tb IIIC T85°C Db IP6x T_{amb} -20°C to +55°C

This certificate and its schedules may only be reproduced in its entirety and without change. This certificate is issued in accordance with the TRaC Ex Certification Scheme.

S.P. Winsor

S P Winsor, Certification Team Leader

Issue date: 2014-10-03

Copy No.: 1e

Page 1 of 4

Form RF355 is16A

NORTH WEST

Unit 1, Pendle Place, Skelmersdale, West Lancashire, WN8 9PN UK.

T +44 (0)1695 556666 F +44 (0)1695 557077 E test@tracglobal.com

www.tracglobal.com

13 **SCHEDULE TO EC TYPE EXAMINATION CERTIFICATE**

14 **TRAC14ATEX0047X**

15 **General description of equipment or protective system included within the scope of this certificate**

The 4290 flameproof enclosure protection level EPL Gb and dust ignition protected EPL Db is cylindrical in construction from either 304 or 316 stainless steel or stronger grade dependent upon the application and varies in both internal and external dimensions dependent upon the application but has an internal volume ranging between 5 and 500cm³. The enclosure is used either as a junction box or to house signal conditioning circuitry. The enclosure consists of two main parts, the enclosure body and the lid which forms a cylindrical flamepath with the body and is secured by four M6 x 16 cap head screws. The sides of the enclosure are machined flat at 0°, 90°, 180° and 270° and are Mxx threaded to allow the fitment of a suitably ATEX certified bulkhead connector or a cable and cable entry supplied with the equipment.

Electrical Rating 0-27Vdc.

A list of controlled Manufacturer's Documents is given in Appendix A to this schedule

16 **Test report No.:** TRA-023079-33-00A.

17 **“Special Conditions of Safe Use” for Ex Equipment:**

1. No modifications shall be made to the flamepaths of the equipment without consultation with the manufacturer.

18 **Essential health and safety requirements**

Covered by application of the standards listed in section 9 of this certificate and the assessment conducted in the test report listed in section 16 of this certificate.

19 **Additional information**

“Routine tests”, if any:

None.

“Special conditions for manufacture”:

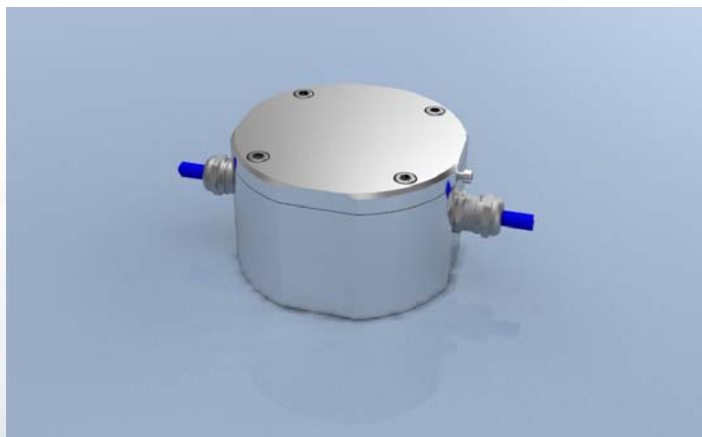
1. All equipment must be supplied either with suitably ATEX certified bulkhead connectors or cables and cable entry devices fitted.

Other information, if any:

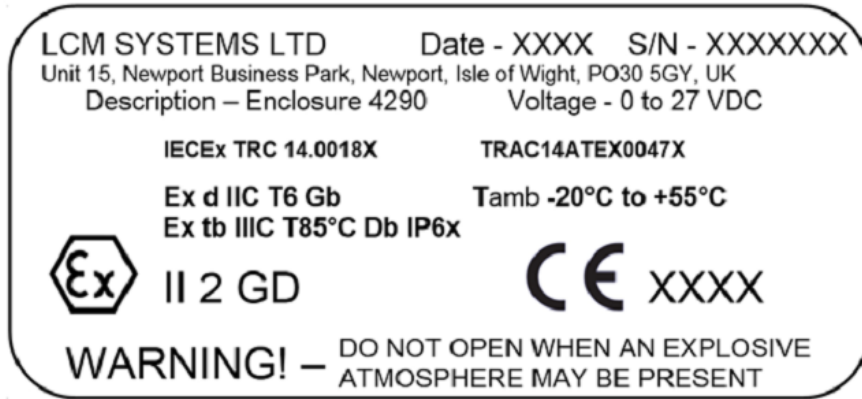
None.

Photographs

4290 Enclosure



Details of markings



Details of variations to this certificate

- None

Notes to CE marking

In respect of CE Marking, TRaC Global Ltd accepts no responsibility for the compliance of the equipment against all applicable Directives in all applications.

Notes to this certificate

TRaC certification reference: **TRA-023079-32-00**.

Throughout this certificate, the date format yyyy-mm-dd (year-month-day) is used.

APPENDIX A - LIST OF CONTROLLED MANUFACTURER'S DOCUMENTS

Title:	Drawing No.:	Rev. Level:	Date:
Ex d Enclosure	LCM 4290	A	2014-08-01
ATEX & IECEx Label	4290/8	A	2014-07-30
Instruction Manual (5 sheets)	QMS REC 6	01	2014-07-24

